

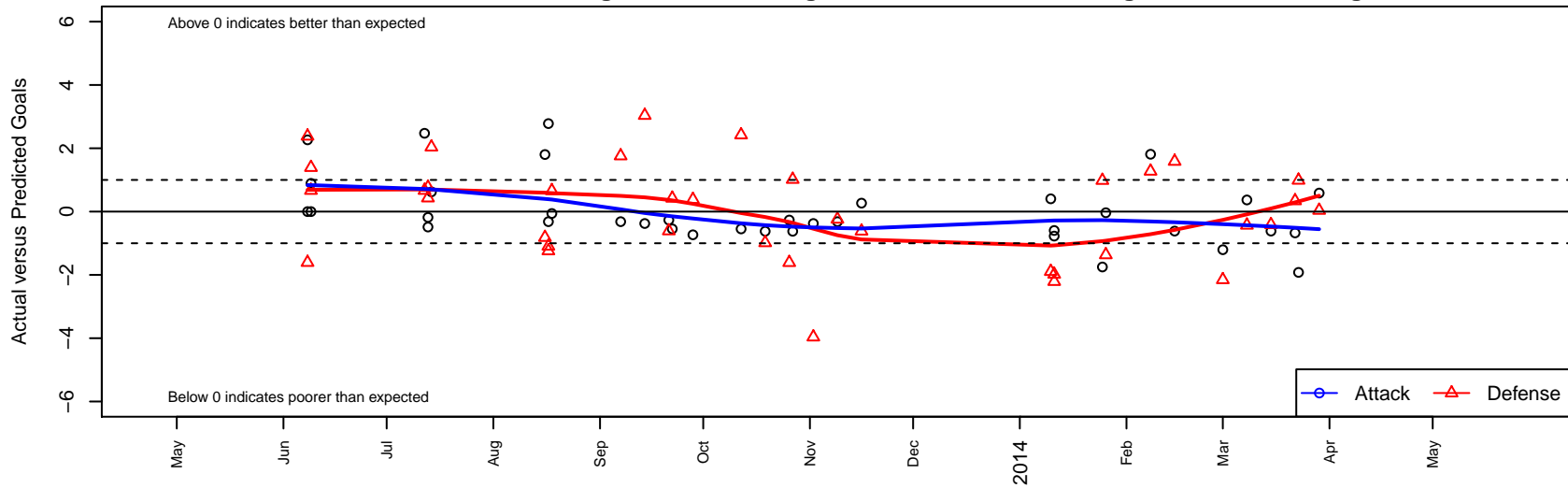
Eastside FC Blue G02

Eastside FC
 Preston, WA
 G02 total strength=118
 attack=0.08 defense=0.11
 fall league = RCL G02 Div 3, Spr RCL G02 Div
 alt names used:
 Eastside FC Blue
 Eastside FC GU11 02 Blue C
 EASTSIDE FC GU11 BLUE (WA)
 EFC G02 Blue
 EFC GU11 Blue

Venues played:
 Snohomish United Invit Silver U11
 Seattle Cup GU11
 Mt Hood Challenge GU11 8v8 Silver
 RCL G02 Div 3
 PacNW Winter Classic Premier II U11
 Spr RCL G02 Div 4
 Challenge Cup G02 Division 3 – Challenge 3



Eastside FC Blue G02
 Dots are actual minus expected GF (blue circles) and GA (red triangles).
 Blue line is smoothed change in attack strength. Red is smoothed change in defense strength.



| | date | home | | away | | venue | pred.home | pred.away |
|------|------------|---------------------------|---|---------------------------|---|--|-----------|-----------|
| 3587 | 2014-03-29 | RV Slammers White G02 | 1 | Eastside FC Blue G02 | 2 | Challenge Cup G02 Division 3 – Challenge 3 | 1.0e+00 | 1.4e+00 |
| 3564 | 2014-03-23 | Eastside FC Blue G02 | 0 | FWFC White G02 | 0 | Challenge Cup G02 Division 3 – Challenge 3 | 1.9e+00 | 9.9e-01 |
| 3533 | 2014-03-22 | Blackhills FC Black G02 | 3 | Eastside FC Blue G02 | 0 | Challenge Cup G02 Division 3 – Challenge 3 | 3.3e+00 | 6.7e-01 |
| 3443 | 2014-03-15 | Eastside FC Blue G02 | 0 | Three Rivers SC White G02 | 2 | Challenge Cup G02 Division 3 – Challenge 3 | 6.2e-01 | 1.6e+00 |
| 3399 | 2014-03-08 | Seattle United Nova G02 | 2 | Eastside FC Blue G02 | 1 | Spr RCL G02 Div 4 | 1.6e+00 | 6.3e-01 |
| 3304 | 2014-03-01 | Eastside FC Blue G02 | 0 | Harbor Premier Green G02 | 4 | Spr RCL G02 Div 4 | 1.2e+00 | 1.8e+00 |
| 3186 | 2014-02-15 | Eastside FC Blue G02 | 0 | Three Rivers SC White G02 | 0 | Spr RCL G02 Div 4 | 6.2e-01 | 1.6e+00 |
| 3172 | 2014-02-08 | Eastside FC Blue G02 | 3 | Highline Premier Red G02 | 0 | Spr RCL G02 Div 4 | 1.2e+00 | 1.3e+00 |
| 3118 | 2014-01-26 | FC Alliance B G02 | 3 | Eastside FC Blue G02 | 1 | Spr RCL G02 Div 4 | 1.6e+00 | 1.0e+00 |
| 3106 | 2014-01-25 | Snohomish United Red G02 | 0 | Eastside FC Blue G02 | 0 | Spr RCL G02 Div 4 | 9.8e-01 | 1.7e+00 |
| 3061 | 2014-01-11 | Harbor Premier Green G03 | 6 | Eastside FC Blue G02 | 0 | PacNW Winter Classic Premier II U11 | 4.0e+00 | 6.0e-01 |
| 3066 | 2014-01-11 | Eastside FC Blue G02 | 0 | PacNW White G02 | 5 | PacNW Winter Classic Premier II U11 | 7.7e-01 | 2.8e+00 |
| 3036 | 2014-01-10 | Eastside FC Blue G02 | 1 | FWFC Blue G02 | 5 | PacNW Winter Classic Premier II U11 | 6.0e-01 | 3.1e+00 |
| 2824 | 2013-11-16 | Crossfire Premier C G02 | 3 | Eastside FC Blue G02 | 1 | RCL G02 Div 3 | 2.4e+00 | 7.3e-01 |
| 2715 | 2013-11-09 | Eastside FC Blue G02 | 0 | Seattle United Tango G02 | 4 | RCL G02 Div 3 | 3.2e-01 | 3.8e+00 |
| 2589 | 2013-11-02 | FC Alliance A G02 | 8 | Eastside FC Blue G02 | 0 | RCL G02 Div 3 | 4.0e+00 | 3.8e-01 |
| 2493 | 2013-10-27 | Eastside FC Blue G02 | 0 | Three Rivers SC Green G02 | 1 | RCL G02 Div 3 | 6.2e-01 | 2.0e+00 |
| 2446 | 2013-10-26 | Eastside FC Blue G02 | 0 | Highline Premier Blue G02 | 6 | RCL G02 Div 3 | 2.7e-01 | 4.4e+00 |
| 2304 | 2013-10-19 | Three Rivers SC Green G02 | 3 | Eastside FC Blue G02 | 0 | RCL G02 Div 3 | 2.0e+00 | 6.2e-01 |
| 2149 | 2013-10-12 | Eastside FC Blue G02 | 0 | RV Slammers Orange G02 | 0 | RCL G02 Div 3 | 5.5e-01 | 2.4e+00 |
| 1779 | 2013-09-28 | Eastside FC Blue G02 | 0 | Crossfire Premier C G02 | 2 | RCL G02 Div 3 | 7.3e-01 | 2.4e+00 |
| 1684 | 2013-09-22 | RV Slammers Orange G02 | 2 | Eastside FC Blue G02 | 0 | RCL G02 Div 3 | 2.4e+00 | 5.5e-01 |
| 1633 | 2013-09-21 | Highline Premier Blue G02 | 5 | Eastside FC Blue G02 | 0 | RCL G02 Div 3 | 4.4e+00 | 2.7e-01 |
| 1474 | 2013-09-14 | Eastside FC Blue G02 | 0 | FC Alliance A G02 | 1 | RCL G02 Div 3 | 3.8e-01 | 4.0e+00 |
| 1301 | 2013-09-07 | Seattle United Tango G02 | 2 | Eastside FC Blue G02 | 0 | RCL G02 Div 3 | 3.8e+00 | 3.2e-01 |
| 1020 | 2013-08-18 | Pacific FC White G02 | 2 | Eastside FC Blue G02 | 1 | Mt Hood Challenge GU11 8v8 Silver | 2.7e+00 | 1.1e+00 |
| 946 | 2013-08-17 | Eastside FC Blue G02 | 4 | Irish United G02 | 3 | Mt Hood Challenge GU11 8v8 Silver | 1.2e+00 | 1.9e+00 |
| 969 | 2013-08-17 | Seattle United Tango G02 | 5 | Eastside FC Blue G02 | 0 | Mt Hood Challenge GU11 8v8 Silver | 3.8e+00 | 3.2e-01 |

| | date | home | | away | | venue | pred.home | pred.away |
|-----|-------------|-------------------------|---|-----------------------------------|---|-----------------------------------|------------------|------------------|
| 898 | 2013-08-16 | Eastside FC Blue G02 | 3 | McMinnville MYSA TNT Dynamite G02 | 3 | Mt Hood Challenge GU11 8v8 Silver | 1.2e+00 | 2.2e+00 |
| 364 | 2013-07-14 | FC Alliance A G02 | 2 | Eastside FC Blue G02 | 1 | Seattle Cup GU11 | 4.0e+00 | 3.8e-01 |
| 336 | 2013-07-13 | Eastside FC Blue G02 | 1 | PS Slammers Black G02 | 0 | Seattle Cup GU11 | 1.2e+00 | 7.7e-01 |
| 342 | 2013-07-13 | NW United Moulton G03 | 0 | Eastside FC Blue G02 | 2 | Seattle Cup GU11 | 4.3e-01 | 2.5e+00 |
| 300 | 2013-07-12 | Eastside FC Blue G02 | 4 | Seattle United NE Blue G02 | 0 | Seattle Cup GU11 | 1.5e+00 | 6.7e-01 |
| 83 | 2013-06-09 | NWN Blue G03 | 1 | Eastside FC Blue G02 | 2 | Snohomish United Invit Silver U11 | 1.7e+00 | 1.1e+00 |
| 85 | 2013-06-09 | NWN Red G03 | 2 | Eastside FC Blue G02 | 0 | Snohomish United Invit Silver U11 | 3.4e+00 | 8.8e-06 |
| 61 | 2013-06-08 | Eastside FC Blue G02 | 0 | NWN Red G03 | 5 | Snohomish United Invit Silver U11 | 8.8e-06 | 3.4e+00 |
| 65 | 2013-06-08 | Crossfire Premier C G02 | 0 | Eastside FC Blue G02 | 3 | Snohomish United Invit Silver U11 | 2.4e+00 | 7.3e-01 |